



# Medina County

## 4-H Newsletter



1506 Avenue. M

Hondo, TX 78861

Ph 830-741-6180

Fx 830-741-6182

E-mail: medina-tx@tamu.edu

Web-site: <http://medina.agrilife.org>

### IMPORTANT!!!

- ORDER SWINE TAGS
- ORDER POULTRY
- COMMERCIAL HEIFERS
- CALF SCRAMBLERS
- HEIFER VALIDATIONS
- FOOD & NUTRITION KICKOFF
- RECORDBOOKS ON-LINE
- QUALITY COUNTS A REQUIREMENT!!

## September 2014

Sun	Mon	Tues	Wed	Thurs	Fri	Sat
	1  Office Closed	2 La Coste 1st 4-H Club Meeting	3 D'Hanis & Hondo 1st 4-H Club Meetings Setup for Steer & Heifer Show 4:00-7:00 pm	4	5	6
7	8 Devine, Castroville, Natalia, Rio Medina 1st 4-H Club Meetings	9	10	11	12	13 MCF Steer & Heifer Prospect Show Heifer Validation
14 MCF Steer & Heifer Prospect Show	15 Swine Tag Orders Due Setup for Lamb & Goat Show 4:00-7:00 pm	16	17 Food & Nutrition Kickoff at St. Paul Lutheran Church @ 6:30-8:00 pm	18	19	20 Medina County Fair Lamb & Goat Prospect Show
21 Medina County Fair Lamb & Goat Prospect Show	22 Commercial Heifer Nominations Due Clean up from Fair 4:00-7:00 pm	23	24 County Council Meeting	25	26 ALL Calf Scramble Entry Deadline State Fair Begins	27
28 Commercial Heifer Validation	29 Club Managers Meeting 6 pm	30				

### Inside this issue:

October Calendar	2
2014-2015 Enrollment	3
Swine Tag Orders	3
Poultry Orders	3
Calf Scramblers	3
Validation Locations/Dates	4
Heifer Validations	4
Quality Counts	4
MCF Prospect Shows	4
Medina County Fair	5
MCJLS Rule Changes	5
Commercial Heifers	5
Enhancing the 4-H Experience	5
Food & Nutrition Projects	6
National 4-H Week	6
Recordbooks	7
County Council	7

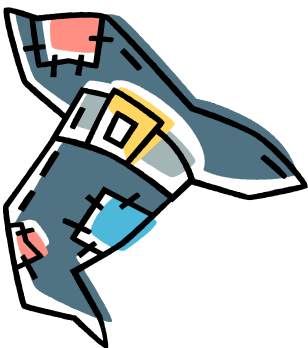
### Coming in October

- Oct. 1** - ALL Broiler Orders Due
- Oct. 6** - Enhancing the 4-H Experience - Braden Keller Center in Castroville
- Oct. 6th - 12th** - National 4-H Week
- Oct. 13th** - Enhancing the 4-H Experience - Extension Office
- Oct. 18th** - Lamb and Goat Validation
- Oct. 20th** - Enhancing the 4-H Experience - Devine (TBA)
- Oct. 25th** - County Food Show (Tentative)
- Oct. 28th** - County Food Challenge (Tentative)

# October 2014



October



Sun	Mon	Tues	Wed	Thurs	Fri	Sat
			1 <b>ALL Poultry Orders Due</b> D'Hanis & Hondo 4-H Club Meetings	2	3	4
5 National 4-H Week Begins	6 Enhancing the 4-H Experience 6:30 - 8:00 pm in Castroville	7	8 Tractor Supply Promo Begins	9	10	11 One Day 4-H
12 National 4-H Week Ends	13 Devine, Natalia, Castroville & Rio Medina 4-H Club Meetings Enhancing the 4-H Experience - Extension Office	14	15	16	17	18 <b>Lamb &amp; Goat Validations</b>
19 Tractor Supply Promo Ends State Fair Ends	20 Enhancing the 4-H Experience - in Devine	21	22	23	24	25 County Food Show (Tentative)
26	27	28 County Food Challenge - Tentative	29	30	31 <b>Happy Halloween</b>	

## Coming in November

- Nov. 1st** - 4-H Enrollment Fee changes to \$25
- Nov. 8th** - Swine Validation (MV Ag Shop)
- Nov. 11th** - Veteran's Day (Extension Office Closed)
- Nov. 15th** - Swine Validation (Hondo/Devine Ag Shops)
- Nov. 29th** - Medina County Fair Swine Prospect Show
- Nov. 27th - 28th** - Thanksgiving Holiday (Extension Office Closed on Thursday & Friday)

## Tractor Supply Promo

**Oct. 8th - Oct. 19th**



## ENROLLMENT FOR 2014-2015 4-H YEAR HAS BEGUN!

**REMEMBER** both youth and volunteers must register each year to be a member of Medina County 4-H. Don't miss out on all the fun projects and workshops provided to 4-H members, receive our monthly newsletter, and join the millions of youth worldwide who "Make The Best Better". Enrollment will be on 4-H Connect at: <https://texas.4honline.com>.

Here are some tips in using 4-H CONNECT:

- If you already have a profile **DO NOT create another one!**
- If you are new to 4-H, set up a profile and follow the prompts.
- Make sure to fill out the Health Form on page 3.
- If you lost your email and password—call your county office they can tell you your e-mail address and reset your password!
- To be an official 4-H member in Texas 4-H you must have an Active profile in 4-H Connect!
- An active membership will not be granted until participation fee is paid
- You cannot register for an event until your profile is ACTIVE.

**Participation Fee**  
**\$20 now through**  
**Oct. 31st**  
**\$25 starting**  
**Nov. 1st**



***If you have any questions or cannot access 4-H Connect please call the Extension Office at 830-741-6180.***



### MEET OUR NEW COUNTY AGENT.....

We want to welcome Derrick Drury to Medina County as our new County Extension Agent. Derrick has a bachelor's degree in agriculture leadership and technology from Angelo State University. His extra curricular activities included participation in the livestock judging team and as an ASU college of agriculture recruiter.

Derrick was most recently an ag science teacher at Medina High School, where he taught wildlife and recreation management, livestock production, small animal management, ag science, animal science, ag mechanics and more. He has also coached several teams including livestock judging, horse judging, vet tech, poultry and wool teams.

Derrick will be a great asset to Medina County, introducing some new activities that will be available to 4-H members.

## LIVESTOCK PROJECT NEWS

### SWINE TAG ORDERS

**Swine tag orders are due**  
**Monday, Sept. 15, 2014**



Order forms are found on our website. Please complete your order form and return it along with your payment to the Extension Office by the due date.

### POULTRY ORDERS

**Broiler Order Due Date:**  
**Major & County Show -**  
**Wednesday, Oct. 1, 2014**

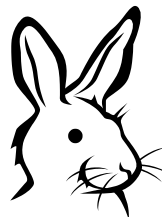


Order forms are found on our website. Please complete your order form and return it along with your payment to the Extension Office by the due date.

### ANIMALS FOR SALE

Breeder lists are available at the Extension Office. We also receive flyers on upcoming events.

**The 2014 Fall Show Pig Sales Trail is available by email or in the Extension Office. Contact the office for more information.**



### RABBIT EXHIBITORS

Breeders lists are available in the Extension Office. If you have not contacted a breeder you need to as soon as possible.



### CALF SCRAMBLERS

Anyone interested in participating in the Houston Livestock Show and Rodeo, San Antonio Livestock Exposition or the Star of Texas-Austin calf scramble need to contact the Extension Office at 830-741-6180 **no later than Friday, September 26th.**

Participants must have reached their 12th, but not their 18th birthday on January 1, 2015 and not be enrolled beyond their junior year in high school.

## VALIDATION DATES

Lambs & Goats	- Saturday, October 18th	(Hondo Show Barn)
Swine	- November 8th (MV Ag Shop) & Nov. 15th	(Hondo, Devine Ag Shops)
Rabbits	- December 27th	(8:00 a.m. Devine Ag Shop, 4 p.m. at the Extension Office)



### NEW.....HEIFER VALIDATION



## HEIFER VALIDATION PROGRAM

Texas is privileged to have the largest junior breeding heifer program in the nation. However, the sheer size of Texas, diversity in counties and beef breed associations has created some challenges for effectively and fairly managing the program. Because of numerous breed divisions offered, there are inconsistencies in how breed associations record purchase and transfer information. Heifer Validation is being initiated to ensure a level playing field for all junior breeding beef heifer exhibitors and to present a unified approach to verifying breeding beef heifer registration papers, ownership and physical possession.

Participating major livestock shows are requiring all junior breeding heifers to be tattooed, brands recorded and hair samples collected for the DNA Assay. All heifers must be validated by the County Validation Committee. Validation will take place **Sept. 13th** at the Medina County Fair Heifer Show as well as **Nov. 1st** at Paul Aelvoet's in Hondo. If you have any questions regarding Heifer Validation contact Derrick Drury at 830-741-6180.

## QUALITY COUNTS

### QUALITY COUNTS VERIFICATION REQUIRED FOR ALL 2015 TEXAS MAJOR LIVESTOCK SHOWS



Quality Counts verification is required for all youth exhibiting livestock (market and/or breeding) at major livestock shows in Texas (including the Ft. Worth Livestock Show, San Antonio Stock Show & Rodeo, Houston Livestock Show and Rodeo, Star of Texas Fair in Austin, San Angelo Livestock Show, Sandhills Stock Show in Odessa, State Fair of Texas in Dallas, and Heart O' Texas Fair in Waco). The verification process will require junior exhibitors to pass an online test that measures their knowledge on quality assurance and character education content items. The Quality Counts Program has now been in existence statewide for six years.

Over this time, it has reached an average of 30,000 youth per year through the 4-H and FFA Programs. The program outcomes clearly demonstrate youth being more knowledgeable of best management practices associated with livestock projects. More importantly, the program's impact has demonstrated positive changes in personal character attributes as well as adoption of livestock best management practices.

Over these six years, Quality Counts has been supported and endorsed by every major livestock show in Texas. These livestock shows have been instrumental in helping market the program statewide and have also been a strong partner regarding the educational content developed for the Quality Counts Program. In addition, these livestock shows have fully endorsed this verification process. Starting in May, youth are able to go online to take the test and become verified. A verification number will need to be provided at the time of making an official entry into a Texas major livestock show. Thus, youth will need to have completed and passed the test before the major livestock show's entry deadline. A passing score has been determined to be 80%. Upon passing the Quality Counts test the youth will not have to retest until their Freshman year of high school. High School youth taking the test for the first time will only have to test once. Youth educators and the major livestock shows in Texas believe strongly in Quality Counts. Collectively, they are confident that this significant step of requiring youth to be "Quality Counts Verified," (started in 2012), will strengthen and enhance the youth livestock program in Texas.

**For more information**, please contact your County Extension Agent or Agriculture Science Teacher. To learn more about Quality Counts including the verification process, please visit <http://qualitycounts.tamu.edu/>.

## MEDINA COUNTY FAIR PROSPECT SHOWS

### We need YOUR help...

The Medina County Fair is fast approaching and we need help setting up the show! Wednesday, September 3<sup>rd</sup> from 4:00 to 7:00 pm we will be setting up for the Heifer and Steer Prospect shows that will take place on September 13<sup>th</sup> and 14<sup>th</sup>.

Monday, September 15<sup>th</sup> from 4:00 to 7:00 pm we will be setting up for the Lamb and Goat shows that will take place on September 20<sup>th</sup> and 21<sup>st</sup>.

Monday, September 22<sup>nd</sup> from 4:00 to 7:00 pm we will need help cleaning up the barn after the fair.

Show pride in your project and help get ready for the show...

## MEDINA COUNTY FAIR

### PROSPECT SHOW SCHEDULE

Category	Arrival & Check-in/ Weigh-in Times	Judging Date and Time
Heifers	Arrive Friday (9/12) 1:00 - 10:00 p.m. or Saturday (9/13) 1:00 - 2:00 p.m. Check heifer registration papers	September 13 3:00 p.m.
Steers	Arrive Friday (9/12) 1:00 - 10:00 p.m. or Saturday (9/13) Weigh and classify steers, 3-6 p.m. Saturday (9/13)	September 14 8:00 a.m.
Goats	May arrive beginning at 7:00 a.m. Check-in and weigh-in from 8:00 a.m. to 10:00 a.m. on judging/show date	September 20 10:00 a.m.
Lambs		September 21 10:00 a.m.
<b>NOTE....</b>	<b>There is no night security for cattle housed overnight. They may arrive on Friday, but it is not required.</b>	<b>....NOTE</b>

### MEDINA COUNTY FAIR - HOME ARTS

The Medina County Fair has been going strong since 1980. This year the fair will be held Sept. 20th - Sept. 21st at the Hondo City Park and Fair Grounds.

All youth are invited to enter the Home Arts Youth Division. The categories include Baked Foods, Canned Foods, Clothing, Crafts, Fine Arts, Floral, Horticultural, Needlework, Furniture, Photography and Quilts. And on the 8th day, God created a Medina County Farmer.

All youth entries will be accepted Friday, Sept. 19th from 8:00 a.m. to 11:00 a.m. (Baked goods on Saturday 8:00 a.m. to 9:30 a.m.)

**For more information call:  
Laurie Henefey at 426-6260 or go to:  
<http://medinacountyfair.org>.**

## MEDINA COUNTY JUNIOR LIVESTOCK SHOW

### 2015 MCJLS RULE CHANGES

At the April 29, 2014 Medina County Junior Livestock Show Board meeting there were some rule changes made. The new rules will be handed out at all validations or can be obtained at the County Extension Office.

### COMMERCIAL HEIFER SHOW

Junior Commercial Heifer Show and Sale was added to the Medina County Junior Livestock Show the last four years to give 4-H and FFA youth with commercial beef projects an opportunity for recognition during the stock show. An average weight of no less than 575 and no more than 775 per head will be allowed at validation. Division rules can be found at: <http://medina-tx.tamu.edu> under publications

Validation for this division will be held at the Thigpen facilities **Sept. 28th** at 2:00 pm. Individuals interested in entering this division must complete a commercial heifer nomination form found on our website and submit a \$20 nomination fee by **Sept. 22nd**. Any prospective exhibitors are encouraged to direct questions to the Extension Office.

## 4-H PARENT CORRAL

### PARENTS...you are invited to "ENHANCING THE 4-H EXPERIENCE" PARENT WORKSHOP.

Do you want to learn more about 4-H and the opportunities available to your children and you as parents and volunteers? Opportunities and our 4-H Program continue to grow every day! With this growth comes the need to prepare and provide our parents and volunteers with the best resources and information possible.

You are invited to *"Enhancing the 4-H Experience"*. This is a Special Night for 4-H Parents and Project Leaders. You will learn about 4-H opportunities, project information and fun "challenges" offered in 4-H. For your convenience, we will give three workshops. Pick the date and/or location that best fits your schedule.

**DATES for the Workshops will be Monday, October 6, 2014, 6:30 – 8:00 pm at the Braden Keller Center in Castroville; Monday, October 13, 2014, 6:30-8:00 pm at the Extension office in Hondo; Monday, October 20, 2014, 6:30-8:00 pm in Devine location to be announced.**

Hope to see you there! If you have questions about this event please call the Extension Office at 830-741-6180.

## FOOD & NUTRITION PROJECTS

### FOOD & NUTRITION PROJECT KICKOFF

**SAVE THE DATE - September 17th** - 6:30-8:00pm at St. Paul Lutheran Church. Come find out what the Food and Nutrition Projects are all about THEN... learn how to make cheese. We'll have information regarding the upcoming Food & Nutrition Contests and then Sandy Steubing will be giving a demonstration on how to make cheese.

**Please call the Extension office and let us know you will be attending this workshop.**

#### COUNTY FOOD SHOW, NQB & FOOD CHALLENGE

The 2014-2015 **County Food Show** will be Saturday, October 18th. (Date is tentatively set and location/time will be in October newsletter) The 2014-15 Guidelines for the Food Show can be found at:

**[http://fcs.tamu.edu/food\\_and\\_nutrition/pdf/2015-4H-state-food-show-guidelines.pdf](http://fcs.tamu.edu/food_and_nutrition/pdf/2015-4H-state-food-show-guidelines.pdf)**

The 2014-2015 **County Food Challenge** will be Tuesday, October 28th. (Date is tentatively set and location/time will be in October newsletter). Guidelines for this event are being updated and will be available soon.

Please let the Extension office know by October 17th if you will have a team for the County Food Challenge.

The **County Nutrition Quiz Bowl** Contest/Practice will be held in January 2015. The guidelines for the Nutrition Quiz Bowl can be found at:

**[http://fcs.tamu.edu/food\\_and\\_nutrition/pdf/2015-quiz-bowl-study-guide.pdf](http://fcs.tamu.edu/food_and_nutrition/pdf/2015-quiz-bowl-study-guide.pdf)**

**District events will be: District Food Show and Food Challenge December 13, 2014-Texas State University; District Nutrition Quiz Bowl February 10, 2015 TBA**

### FOOD & NUTRITION PROJECTS

It's time to get cookin'... The 4-H Food and Nutrition projects begin in September. The food and nutrition project helps participants learn to make healthy food choices, improve energy and alertness, reduce disease and illness risks, and gain knowledge of nutrients. Major learning experiences are centered around nutrition, menu planning, food buying, preparation and food safety, careers, and cultural influences.

Here are a few things you may want to get involved in:

- 4-H Food Show-County contest, Saturday, October 18th
- Food Challenge-County contest, Tuesday, October 28th
- 4-H Food and Nutrition Quiz Bowl-County contest/ practice January 2015
- Recipe Rally
- SpecTra - Human Sciences Education (limited to 22 senior participants)

We will have a Food and Nutrition Kickoff workshop September 17<sup>th</sup> where we will discuss these contests further.

All of these are still in the planning stages so watch for more information in future newsletters. If you would like more information regarding any of these competitions please call the Extension Office at 830-741-6180.



## NATIONAL 4-H WEEK

Welcome to the 2014-2015 4-H year and what a great year it is going to be for 4-H in Medina County! The Texas A&M AgriLife Extension Service staff in Medina County and our awesome 4-H volunteers are committed to the education and development of the youth in Medina County to be the future leaders of our county, state, country and world.

We are proud of more than 106 years of providing life development opportunities and look forward to the future and the opportunities it brings to our program and our youth. Each year during National 4-H Week, October 7th - 13th, we encourage 4-H clubs and members to highlight program's successes and showcase what the youth have gained from their membership in 4-H through activities and events. One way to showcase the value of 4-H to the public is to participate in a community service through "One Day 4-H". (See *One Day 4-H* information in the next article)

#### oneday 4-H Website – October 11, 2014

One day 4-H is one day for all the 4-H members, parents, leaders, and volunteers to step out into their communities and county and say "thank you" by giving back to them for more than 106 years of support to 4-H in Texas. This day of community service is what ever each 4-H members, club, or county 4-H Program wants it to be. It could be as simple as picking up trash or mowing the lawn for senior citizens to elaborate as hosting a 5K Walk/Run and raising money for a cause.

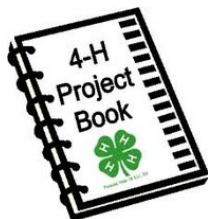
#### How do you participate?

- 4-H members and their clubs/county programs should start now on identifying and planning a community service project.
- Work to secure all the necessary supplies/equipment/resources to get the project done.
- Advertise/market your project to locate media and others in the community so they will know the difference you, and 4-H, is making.
- Sign your project up at the one day 4-H website
- Conduct your project and then report your successes at the one day 4-H website.

**For more information go to:** <http://texas4-h.tamu.edu/oneday/index.php> or call the Medina County Extension Office at 830-741-6180.

## RECORDKEEPING

### 4-H RECORDBOOKS



It's time to start keeping records for your 2014-2015 Projects. Keeping records is a great way to hold on to your memories about your incredible adventures in 4-H. Record keeping is also a great way to develop skills in time management, communication, setting goals and deadlines, money management and project evaluations. In an effort to update the current recordbook system a committee has developed an online program with a data entry system that easily allows for updates, editing and printing.

- There will be three (3) levels of recordbooks based on 4-H age (junior, intermediate, and senior). Information requested for each level will progressively add on to each other. The junior & intermediate books are significantly simplified from past recordbooks. The senior level book is similar to the past record book with some minor edits.
- Parts of the report form will be standardized to allow for ease of completion and judging.
- Much of the data from previous recordbooks that a member may have saved on their home computer may be "cut and pasted" into the new form.
- All 4-H members will begin using the new online forms or a new paper form that will be available for download from the Texas 4-H website.
- Recordbooks will still be printed and turned in (in hardcopy form) to be judged by the deadline set by your local County Extension Office.

**This system is available for use at:**  
[http://texas4-h.tamu.edu/youth\\_recordbooks](http://texas4-h.tamu.edu/youth_recordbooks)

### 4-H PROJECT RECORD FOR ALL ANIMAL AND POULTRY PROJECTS

Record keeping is an important part of the 4-H Program and a good life skill to have. Records teach the skill of record keeping, encourage good work, show progress, growth and accomplishment, helps direct future plans and helps determine recognition.



The 4-H Project Record should not be confused with the "big" project recordbook in 4-H. This record is solely on your animal or poultry project and must be turned in at the end of your animal project. This is the record that is turned in along with your "thank you" notes after the County show.

As your project is conducted, management and activity records should be kept on a daily, weekly and monthly basis. At the end of your project summarize your project and reflect on specific things you learned in your project, list all activities you participated in your project, list awards and recognition you received, any leadership you may have displayed and any community service related to your project.

Again, this is a great way to plan for future projects as well as show your progress, growth and accomplishments.

For more information on this record form call the Extension Office. You can find the form on the Medina County AgriLife Extension website:

<http://medina.agrilife.org/publications/livestock-projects/>

### COUNTY COUNCIL

The first meeting of the Medina County 4-H Council will be Wednesday, September 24<sup>th</sup> from 7:30-8:30 pm at the Extension office. New Officers, Rees Saathoff-President, Rainey Bingham-1<sup>st</sup> Vice President, Jacie Henefey-2<sup>nd</sup> Vice President, Haley Steubing-Secretary, Ashley Dickerson-Treasurer, Wyatt Gibson-Reporter, Cody Garrison and Hunter Asbury-District Council Delegates, will be installed and the 2014-2015 Budget will be presented and accepted. If you are a President, Vice President or Council Delegate of your club you need to attend.



## Club Managers

4-H Club	Manager(s)	Phone #
Castroville	Leticia Teague Aris Vogt	830-534-5310 210-274-1096
Devine Jr. (3rd—12th)	Jason & Stacy Skow Katherine Hines John & Trisha Naegelin	210-487-0722 210-857-2475 210-413-5045
D'Hanis	Letha Garrison Laurie Henefey	830-931-4147 830-426-6260
Hondo Intermediate (3rd—5th)	Amy Leonard Jennifer Thigpen Dottie Heiligman	830-426-5156 830-426-1963 830-741-2471
Hondo Jr. (6th—8th)	Buffie Rogge Laurie Lentz Bonnett Lange	830-741-2195 210-213-2088 210-860-3221
Hondo High (9th—12th)	Sandy Steubing  Paul Aelvoet Chelley Gibson Onnie Saathoff Vicky Steubing	830-741-3844 or 830-931-5327  830-931-4223 830-931-5076 830-741-5246 210-275-3973
LaCoste	Melinda DeCock Tracy Chafin	210-884-3065 830-709-5553
Natalia	Eric Owens	830-444-6184
Rio Medina	Betty M. Carroll Karen Neuman Anne Keeter	210-835-5632 210-844-7039 281-889-0080

### TEXAS 4-H AGE AND YEAR

Texas 4-H activities and events are open to enrolled members between the ages of:

9 (or 8 and in 3<sup>rd</sup> grade) and 18 on August 31, 2014.

#### Age Divisions of 4-H Contestants

Senior: youth between ages of 14 and 18 on August 31, 2014

Intermediate: youth between ages of 11 and 13 on August 31, 2014

Junior: youth between ages of 9 (or 8 and in the 3<sup>rd</sup> grade) and 10 on August 31, 2014.



### How to Contact Us

Sandra Kunkel: [s-kunkel@tamu.edu](mailto:s-kunkel@tamu.edu)

Derrick Drury: [derrick.drury@ag.tamu.edu](mailto:derrick.drury@ag.tamu.edu)

Debby Bodenchuk: [bodenchuk@ag.tamu.edu](mailto:bodenchuk@ag.tamu.edu)

Office Hours: 8:00am-Noon & 1:00pm-5:00pm



Derrick Drury

Medina County Extension Agent

Agriculture / NR

Sandra Kunkel

Medina County Extension Agent

FCS

Debby Bodenchuk

Medina County

4-H Program Asst.